

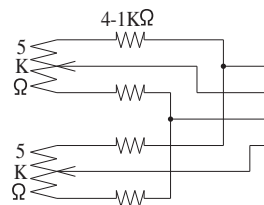
IRIS CABLE

DC (DIRECT CONTROL)

DRIVE COIL	RESISTOR	190	(20°C)
	COLOR	RED(+)	BLACK
BRAKE COIL	RESISTOR	1150	(20°C)
	COLOR	YELLOW(+)	GREEN
DRIVE VOLT.	OPEN	LESS THAN +4V	
	CLOSE	OVER THAN 0V W/CLOSING SPRING	

MOTOR CABLE

(+)	GREEN	FOCUS NEAR
(+)	BLACK	FOCUS FAR
(+)	YELLOW	ZOOM IN
(+)	RED	ZOOM OUT



SPECIFICATION

1. USE	FOR 1/2" COLOR ,B/W CAMERA		
2. FOCAL LENGTH	f = 15 - 300 mm		
3. IRIS RANGE	F = 2.5 - 360 CLOSE		
4. IMAGE SIZE	Φ 8 (4.8 x 6.4)		
5. BACK FOCAL LENGTH	14.4 mm in air		
6. FLANGE FOCAL LENGTH	17.526 mm in air		
7. FOCUS RANGE	(W) 1m (T) 4m		
8. FIELD ANGLE	DIA.	(W) 30.1	(T) 1.55
	HOL.	24.2	1.25
	VER.	18.2	0.94
9. DISTORTION	(W)	-0.3 %	(T) +0.6 %
10. CLEAR APERTURE	FRONT	Φ 76.3	REAR Φ 9.8
11. EXIT PUPIL POSITION	-189mm (format)		
12. WEIGHT	1090 g (g)		
13.			

GAZ1530025 VARI

